

Protecting water, by protecting land

Goal: Complete 45 Conservation Easements on private lands, and protect over 2,700 acres of high quality forest upland habitat.



Woodlands are giant water filters

Forests and well vegetated lands serve as a giant natural sponge, filtering and retaining storm water. The root system and vegetative base of woodlands protect both groundwater and surface water.



Land use affects water quality

The "Disturbance" of land has an effect on its ability to slow down and filter storm water runoff. As woodlands are developed or converted to crop or pasture lands the soil loses its ability to retain and filter water.



25%

The tipping point for water quality

Studies show that when more than 25% of the forest within a watershed is converted to other land uses, the water quality, begins to decline. Much of the decline is due to greater amounts of phosphorus entering the water.



75%

The protection goal is 75%

Because of water quality decline at 25% land disturbance, the protection goals for a watershed are then 75%. If this land percentage can be maintained, a certain quality of water can usually be reached.



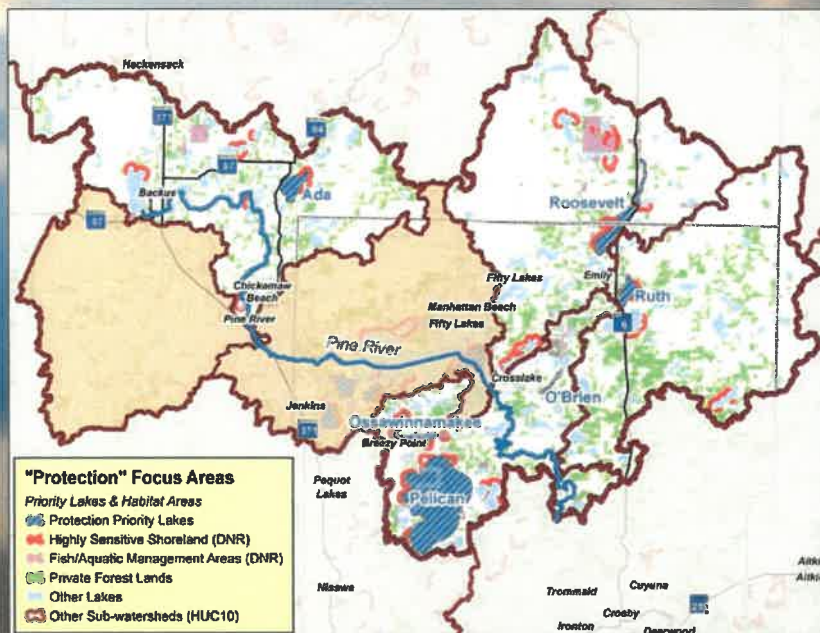
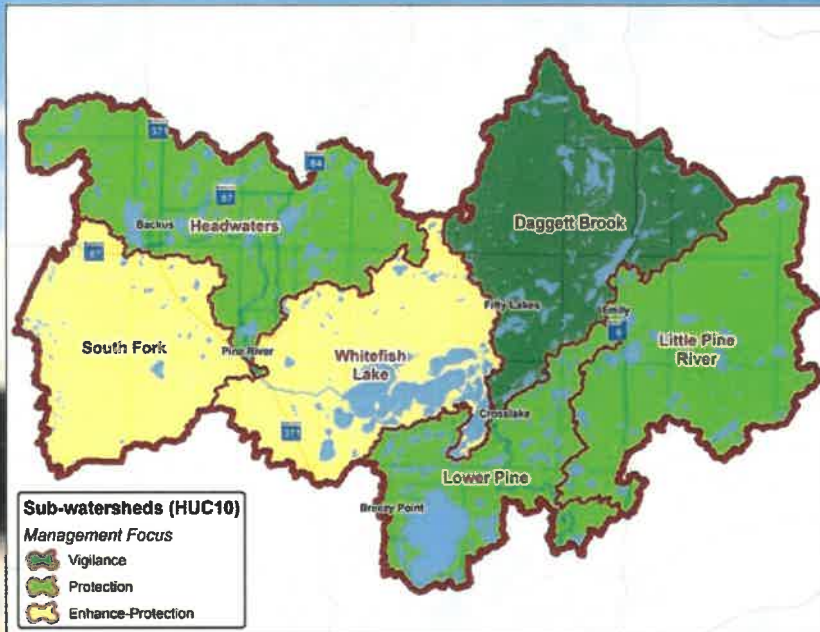
36% of Minnesota's forests are private, they are 100% essential for clean water!



Northern Minnesota is the headwaters for most of the state's clean drinking water!



We need to protect priority lakes and increase permanent protection funding for the iconic symbols of Minnesota's natural heritage... our lakes!



Protection Focus Areas

What to Protect:

Sensitive and Outstanding Lakes, Forests, Habitat, Groundwater, Wetlands, Source water to down-stream cities & communities.

How:

- Promote Private Forest Management to keep forested areas forested
- Protect undeveloped shore lands in sensitive habitat areas

Measure Success:

Protect 75% of the forested land within the minor watershed from land conversion or development.

Protecting quality lakes is more cost effective than restoring impaired lakes.

There are substantial risks that threaten our northern lakes

Lakes are the centerpiece of our MN way of life!


CROW WING
Soil & Water
CONSERVATION DISTRICT

218-828-6197


HUBBARD COUNTY
Soil & Water
Conservation District

218-732-0121